

JABRA EASYGO - FOR PC

Bluetooth® headset and USB adapter

Works with any Bluetooth® enabled phone

DATASHEET



BRINGING **WIRELESS FREEDOM** TO Skype™ CALLS

One great sounding solution for internet and phone calls

With the Skype™ Certified, Jabra EASYGO, you can now enjoy all the benefits of wireless communication when you make and take internet-based calls. No installation is needed, it's just plug 'n play. Simply insert the USB adapter into your PC or laptop and it will automatically make a connection with the EASYGO Bluetooth® headset. The Jabra EASYGO is stylish yet discreet, and its lightness and shape make it a joy to wear. It has DSP technology for crystal clear sound and an automatic volume control that keeps volume constant even when you move between quiet and noisy environments. It also has Voice Guidance that tells you when it is connected to your PC or phone and if you need to recharge it.

Even when you are connected to your computer, the Jabra EASYGO can maintain a connection with your mobile phone. So when you need to, you can switch seamlessly between the two. And whichever medium you talk through you, will feel comfortable doing so. Light and compact, the Jabra EASYGO is always a pleasure to wear. Now you're free to talk to the world without being tied to your computer.



Reasons to choose the Jabra EASYGO - FOR PC

- Spoken battery and connection status
- Plug 'n play - No installation
- Manage PC & mobile calls simultaneously



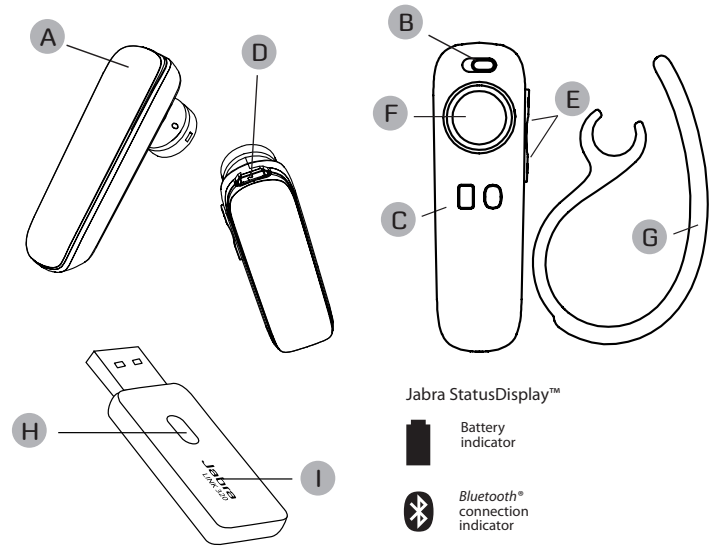
A BRAND BY



JABRA® IS A REGISTERED TRADEMARK OF GN NETCOM A/S

WWW.JABRA.COM/EASYGOPC





Jabra StatusDisplay™



Quick Start Guide

Charging your headset

Charge your Jabra EASYGO headset until the LED light turns green. After 5 minutes the LED will turn off. Charging time is approximately 2 hours.

Turning your headset on and off

Slide on/off button to turn the headset on or off. The LED light will turn green when the headset is on.

Using your headset with Skype™

Insert the USB Adapter in a free USB port on your PC. When Windows has installed the USB adapter turn on your headset and it will connect automatically to the USB adapter.

Go to www.skype.com/download and download the latest version of Skype. When Skype is installed and started create a new Skype Name or log in on your existing account. Click 'OK' to use the Jabra LINK320 with Skype. Test your audio. Make your first Skype call.

Pairing the headset with your phone

Turn your headset on. Press and hold the answer/end button until Bluetooth connection indicator is flashing blue. Activate Bluetooth on your phone. Then set your phone to search for Bluetooth devices and select Jabra EASYGO. Press 'OK' on the phone and if you're asked for a PIN code, confirm with PIN 0000. (4 zeros).

Voice Guidance

Connection Voice Alert

When your headset has successfully established connection with your phone and is ready to be used, the Jabra Voice Guidance will say "connected".

Battery Low Voice Alert

When your headset has battery for less than 30 minutes the Jabra Voice Guidance will say "low battery". This message will be repeated with a ten minute interval.

Using your headset

Answer a call – Tap the answer/end button on your headset.

End a call – Tap the answer/end button to end an active call.

Wearing style

Wear the Jabra EASYGO with or without an ear hook.

To wear with ear hook, please attach on for right or left ear wearing.

A Answer/end button

B On/off button

C StatusDisplay™

With battery indicator and connection indicator

D Charging socket

E Volume up/down

F Jabra Ultimate Comfort Eargels™

G Jabra Earhook

H Multifunction Button

I LED Indicator Blue/Green/Red

Features and Specifications

1. Ease of use with Skype Certification and plug 'n play USB adapter. Charge and turn on headset, plug USB adapter into PC, start Skype, and make your first wireless Skype call.
2. Up to 6 hours talk time and up to 8 days standby time
3. Lightweight – weighs only 0.3 oz (8g)
4. Wear it with or without the earhook. Two sizes earhook are provided for individual comfort. Two Ultimate Comfort Eargels™ are included to use without earhook.
5. Headset: L 2.11 x W 0.62 x H 0.35 in (L 53.7 x W 15.8 x H 9mm)
6. USB adapter: L55 mm x W18 mm x H7.5 mm (L 2.2 x W 0.7 x H 0.3 in)
7. Bluetooth technology - clear sound with Bluetooth 2.1 + EDR & eSCO
8. Auto-pairing for no-nonsense set-up
9. Jabra Discreet Light feature – the light indicator (LED) does not continually flash
10. Features answer/end, redial and voice dial*
11. Charging plug: USB Micro-B, 5-pin

* Some features are device dependent

Freephone customer support numbers:

Denmark	Phone: 70252272	E-mail: support.no@jabra.com
Finland	Phone: 00800 722 52272	E-mail: support.no@jabra.com
Italy	Phone: 800 786543	E-mail: support.it@jabra.com
Norway	Phone: 800 61272	E-mail: support.no@jabra.com
Spain	Phone: 900 984 542	E-mail: support.es@jabra.com
Sweden	Phone: 020792522	E-mail: support.no@jabra.com
UK	Phone: 0800 0327026	E-mail: support.uk@jabra.com

A BRAND BY



JABRA® IS A REGISTERED TRADEMARK OF GN NETCOM A/S

WWW.JABRA.COM/EASYGOPC

